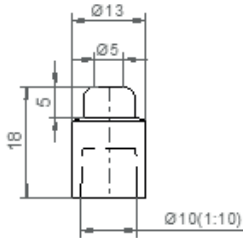


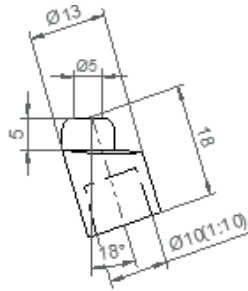
SPOT WELDING CONE ELECTRODE CAPS

Ø 13x18

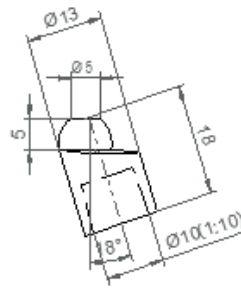
Z000 271 736 zentrisch



Z000 342 731 exzentrisch 18°

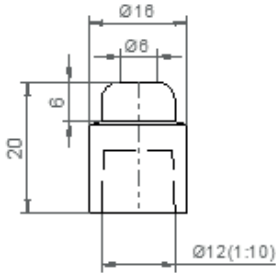


Z000 277 004 exzentrisch 18°

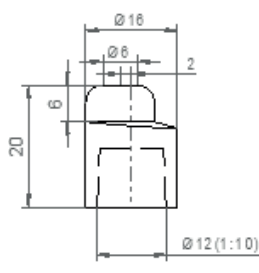


Ø 16x20

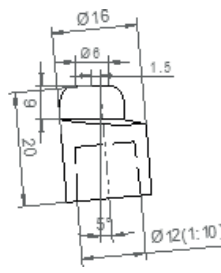
P911 310 112 zentrisch



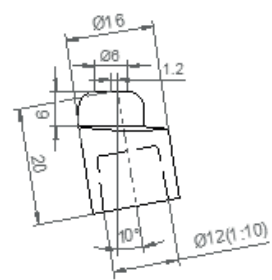
P911 310 206 exzentrisch



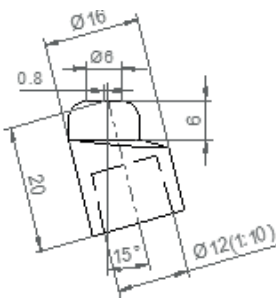
P911 310 208 exzentrisch 5°



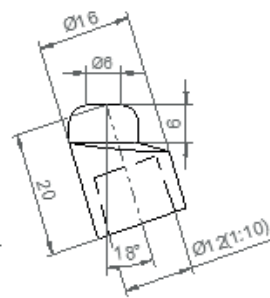
P911 310 209 exzentrisch 10°



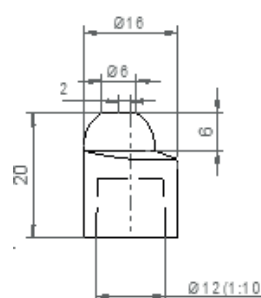
P911 310 207 exzentrisch 15°



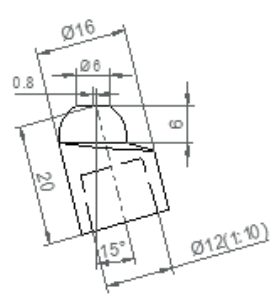
P911 310 210 exzentrisch 18°



Z000 120 921 exzentrisch

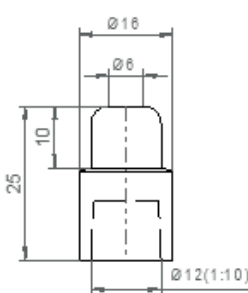


P911 310 213 exzentrisch 15°

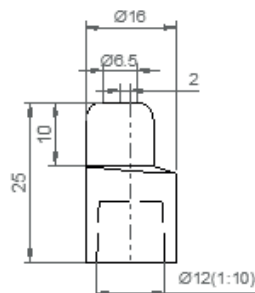


Ø 16x25

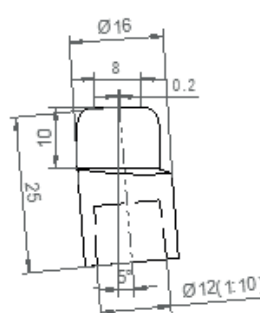
P911 311 186 zentrisch



R100 188 013 exzentrisch



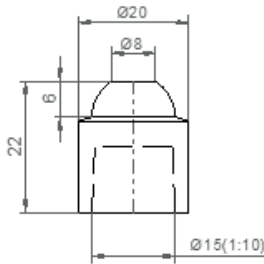
R100 150 738 exzentrisch 5°



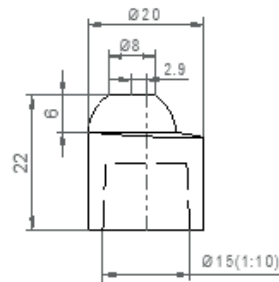
SPOT WELDING CONE ELECTRODE CAPS

Ø 20x22

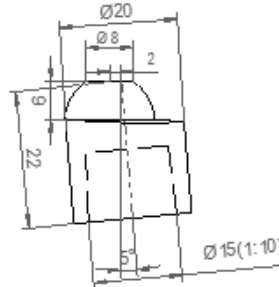
Z000 120 926 zentrisch



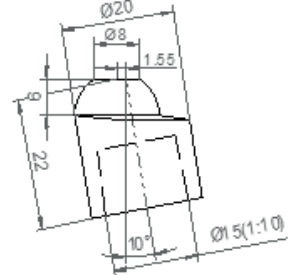
Z000 120 927 exzentrisch



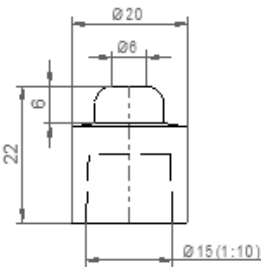
Z000 120 928 exzentrisch 5°



Z000 120 929 exzentrisch 10°



Z000 358 775 zentrisch



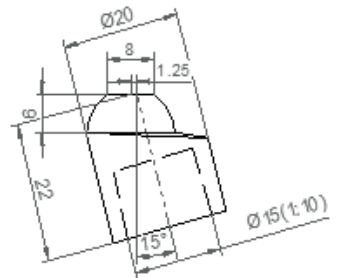
Z000 358 776 exzentrisch



Z000 358 777 exzentrisch 10°

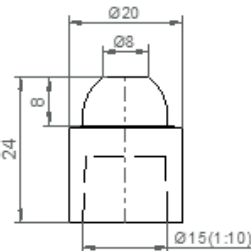


P911 321 205 exzentrisch 15°

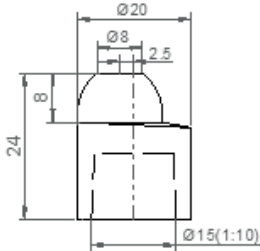


Ø 20x24

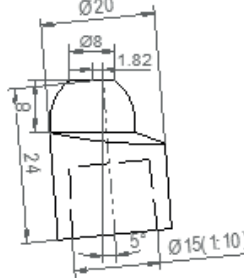
Z000 412 809 zentrisch



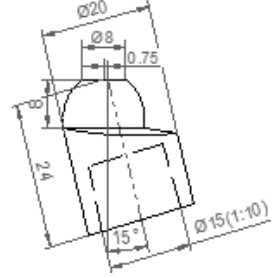
Z000 412 810 exzentrisch



Z000 412 810 exzentrisch 5°

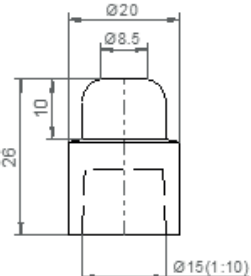


Z000 412 812 exzentrisch 15°

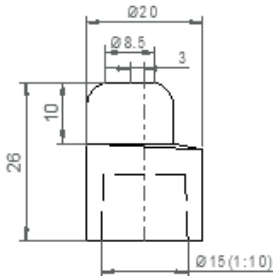


Ø 20x26

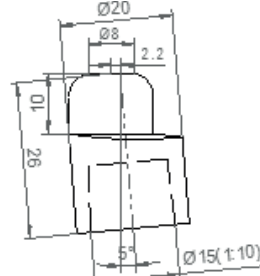
R100 149 380 zentrisch



R100 149 382 exzentrisch



R100 149 383 exzentrisch 5°



R100 149 384 exzentrisch 10°

