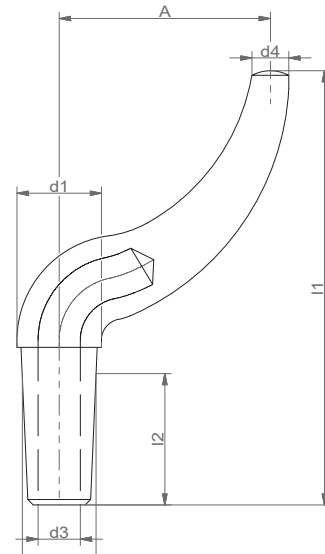


CRANKED SPOT WELDING ELCTRODES

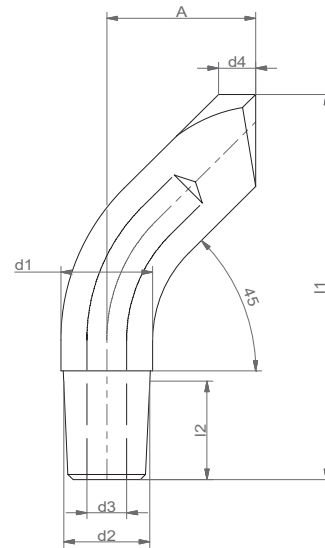
Type E

Taper	d1	d2	d3	d4	l1	l2	A	Art.-No.
MK1	16	12,065	6,5	7	100	25	40	1 E-100
MK2	20	17,780	9	8	115	35	45	2 E-115
						22	50	
MK3	25	23,826	11	10	130	45	60	3 E-130



Type G

Taper	d1	d2	d3	d4	l1	l2	A	Art.-No.
MK1	12,5	12,065	8	4	55	14	25	1 G-55
MK2	18,5	17,780	10	6	70	22	30	2 G-70



Type G 1

Taper	d1	d2	d3		l1	l2	A	Art.-No.
MK1	12,5	12,065	8		55	14	25	1 G 1-55
MK2	18,5	17,780	10		70	22	30	2 G 1-70

