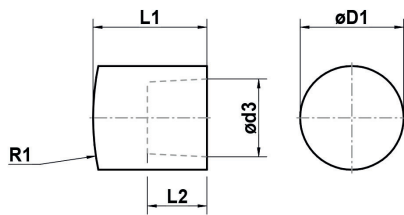


SPOT WELDING ELECTRODE CAPS

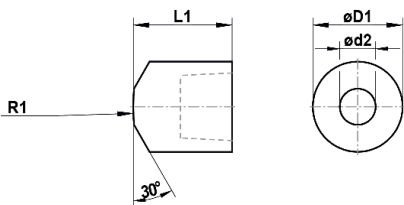
Spot welding electrode caps ISO 5821

Type A



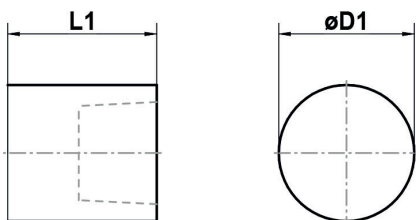
D1h11	d2	d3	l1	l2+0.5/-0	e	R1	R2
13		10	18	8		32	
16		12	20	9,5		40	
20		15	22	11,5		50	

Type B



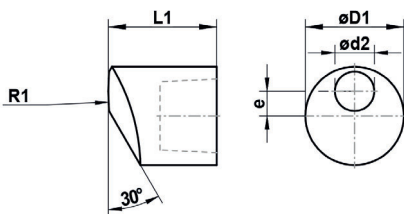
D1h11	d2	d3	l1	l2+0.5/-0	e	R1	R2
13	5	10	18	8		32	
16	6	12	20	9,5		40	
20	8	15	22	11,5		50	

Type C



D1h11	d2	d3	l1	l2+0.5/-0	e	R1	R2
13		10	18	8			
16		12	20	9,5			
20		15	22	11,5			

Type D

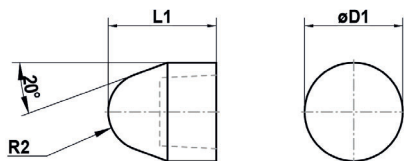


D1h11	d2	d3	l1	l2+0.5/-0	e	R1	R2
13	5	10	18	8	3	32	
16	6	12	20	9,5	4	40	
20	8	15	22	11,5	5	50	

SPOT WELDING ELECTRODE CAPS

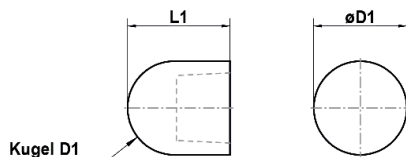
Spot welding electrode caps ISO 5821

Type E



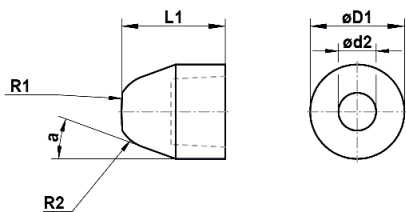
D1h11	d2	d3	l1	l2+0.5/-0	e	R1	R2
13		10	18	8			5
16		12	20	9,5			6
20		15	22	11,5			8

Type F



D1h11	d2	d3	l1	l2+0.5/-0	e	R1	R2
13		10	18	8			
16		12	20	9,5			
20		15	22	11,5			

Type G



D1h11	d2	d3	l1	l2+0.5/-0	e	R1	R2
13	5	10	18	8		32	5
16	6	12	20	9,5		40	6
20	8	15	22	11,5		50	8