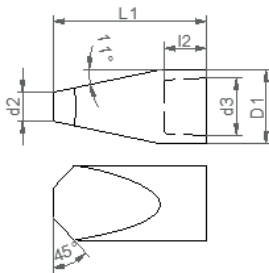


SPOT WELDING ELECTRODE CAPS

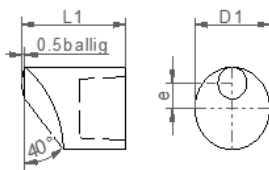
SVS-standard

K12,5-010



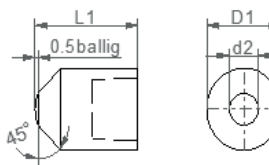
D1h11	d2	d3	l1	l2+0.5/-0	e
13	5	10	29	8	

K12,5-019



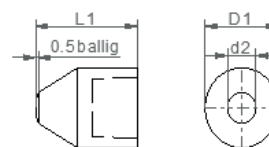
D1h11	d2	d3	l1	l2+0.5/-0	e
13	5	10	18	8	4

K12,5-020



D1h11	d2	d3	l1	l2+0.5/-0	e
13	5	10	18	8	

K12,5-029

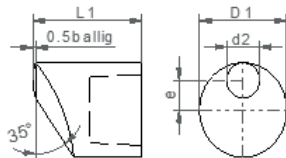


D1h11	d2	d3	l1	l2+0.5/-0	e
16	6	12	20	9,5	

SPOT WELDING ELECTRODE CAPS

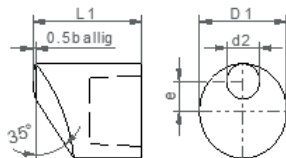
SVS-standard

K16-005



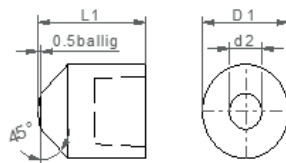
D1h11	d2	d3	l1	l2+0.5/-0	e
16	6	12	20	9,5	

K16-013



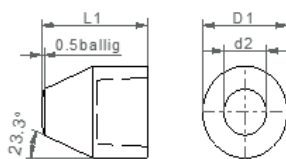
D1h11	d2	d3	l1	l2+0.5/-0	e
16	6	12	20	9,5	5

K16-017



D1h11	d2	d3	l1	l2+0.5/-0	e
16	6	12	20	9,5	

K16-030



D1h11	d2	d3	l1	l2+0.5/-0	e
16	8	12	20	9,5	