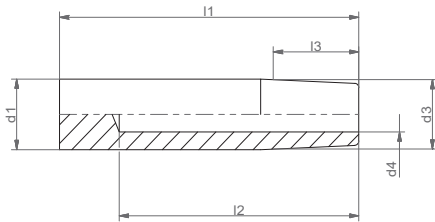
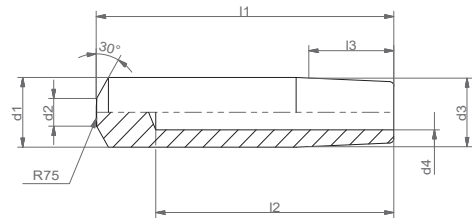


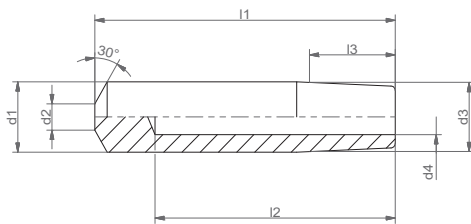
STRAIGHT SPOT WELDING ELECTRODES

Type A


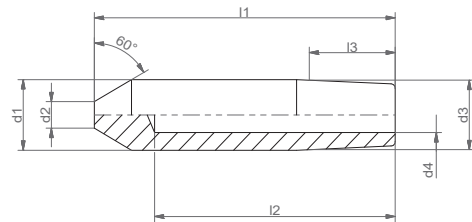
Taper	d1	d2	d3	d4	l1	l2	l3	Art.-No.
MK1	12,5	12,5	12,065	8	40	27	14	1 A-40
MK2	18	18	17,780	10	55	40	22	2 A-55

Type B1


Taper	d1	d2	d3	d4	l1	l2	l3	Art.-No.
MK1	12,5	6	12,065	8	40	27	14	1 B 1-40
MK1					55	42		1 B 1-55
MK2	18	8	17,780	10	40	25	22	2 B 1-55

Type B


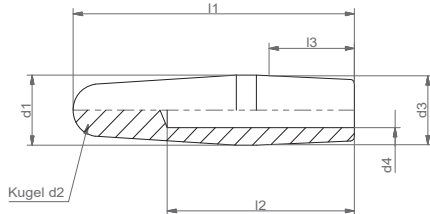
Taper	d1	d2	d3	d4	l1	l2	l3	Art.-No.
MK1	12,5	6	12,065	8	30	17	14	1 B-30
					40	27		1 B-40
					55	42		1 B-55
					70	57		1 B-70
1:10			12,000		30	17		11 B-30
					40	27		11 B-40
MK2	18	8	17,780	10	40	25	22	2 B-40
					55	40		2 B-55
					70	55		2 B-70
					90	75		2 B-90
MK3	24,5	10	23,826	12	70	54	22	3 B-70

Type B2


Taper	d1	d2	d3	d4	l1	l2	l3	Art.-No.
MK0	9,5	5	9,045	-	30	-	11	0 B 2-30
MK1	12,5	6	12,065	8	30	17	14	1 B 2-30
					40	27		1 B 2-40
					55	42		1 B 2-55
					70	57		1 B 2-70
					70	57		11 B 2-70
1:10			12,000		30	17		11 B 2-30
					40	27		11 B 2-40
					40	27		11 B 2-40
MK2	18	8	17,780	10	70	57	22	11 B 2-70
					55	40		2 B -70
					90	75		2 B -90
1:10					55	40	18	12 B 2-55
MK3	24,5	10	23,826	12	70	54	22	3 B 2-70

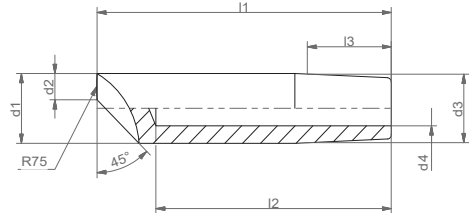
STRAIGHT SPOT WELDING ELECTRODES

Type B4



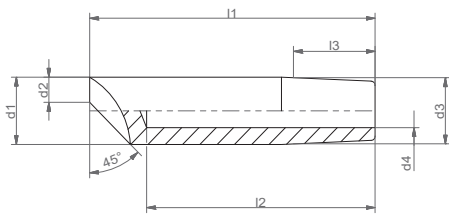
Taper	d1	d2	d3	d4	l1	l2	l3	Art.-No.
MK1	12,5	8	12,065	8	40	27	14	1 B 4-40
					55	42		1 B 4-55
					70	57		1 B 4-70
1:10			12,000		40	42	11 B 4-70	
MK2	18	12	17,780	10	55	42	22	2 B 4-55
					90	75		2 B 4-90

Type D1



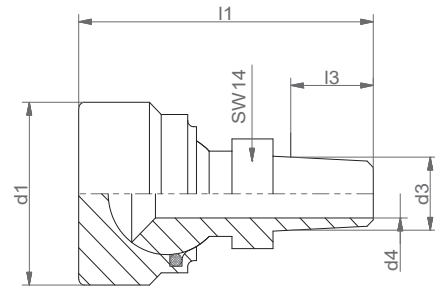
Taper	d1	d2	d3	d4	l1	l2	l3	Art.-No.
MK1	12,5	6	12,065	8	30	17	14	1 D 1-30
					40	27		11 D 1-40
1:10			12,000		55	42		11 D 1-55
MK2	18	8	17,780	10	40	22	22	2 D 1-55
					70	55		2 D 1-70

Type D



Taper	d1	d2	d3	d4	l1	l2	l3	Art.-No.
MK1	12,5	6	12,065	8	55	42	14	1 D-55
MK2	18	8	17,780	10		40	22	2 D-55

Type P



Taper	d1	d2	d3	d4	l1	l2	l3	Art.-No.
MK1	30	-	12,065	7	50	-	14	1 P-56
MK1	22		17,780	10	58			1 P-42
MK2	30		12,000	7	50	22	2 P-63	
			17,780	10	58	22	11 P-48	
1:10			17,780	10	58		12 P-52	